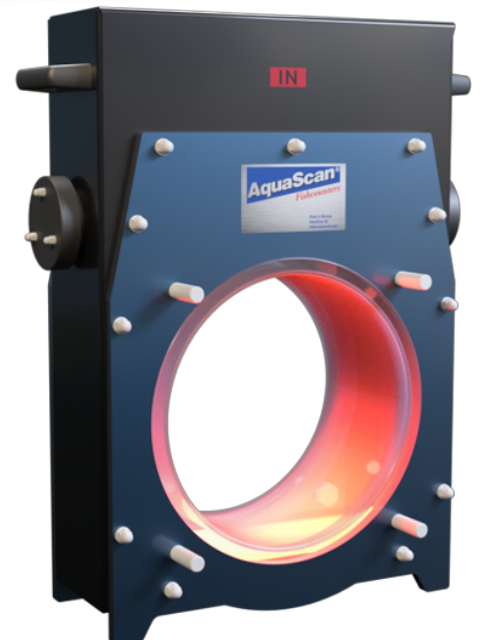


AquaScan Registration Unit CSE3500

Material	Powder painted aluminum and POM
Weight	32kg
Dimensions	764,5 x 628 x 316mm
*Capacity	75 tonnes/unit/hour (5kg)
Power Consumption	22W
Power Supply	Powered by the Control Unit
Flange connection	DN350 PN10, 4 x M20 bolts
Fish size range	30g - 18kg
Accuracy	98-100%
Arrangement	Approx. 30° tilt forward. Dry/Film of water
Fish speed	2,5 - 3m/s
Cable included	10 meters AquaScan extension cable
Requirements	AquaScan Control Unit
Video	N/A



*Theoretical estimation based on optimal conditions